

Summer 2024

Vol. 60 No. 3

In this issue

Aquatic Mammals of LMG

Welcome New LMG Board Members

Greeting from Incoming Board President, Megan Styles

Community Scientist Opportunity: Illinois Bat Conservation Program

2024 Photo Contest

What's New in the Garden

Membership Matters

Day Trip June 27

Welcome New Members

Thank You to Our Many Supporters

Memorials

Calendar of Events

Visit the Garden!

Hours of Operation:

NATURE CENTER

10 – 4 — Tuesday – Saturday

1 – 4 — Sunday

Closed Monday

GARDEN

Garden is open every day sunrise to sunset.

P: 217-529-1111

E: joel@lincolnmemorialgarden.org

www.lincolnmemorialgarden.org



STAFF

Executive Director Joel Horwedel
Environmental Educator ... Audra Walters
Head Gardener Marissa Jones
Board President Megan Styles
Newsletter Team

Dick and Helen Adorjan, Polly Danforth,
Colleen Germeraad, Melissa Skinner-
Lieberman, Megan Styles, Cathy Slater,
Audra Walters, and Kathy Andrews Wright



Newsletter of Lincoln Memorial Garden and Nature Center

Seasons

Aquatic Mammals of Lincoln Memorial Garden

by Kathy Andrews Wright

If you spend any time walking the shoreline trails at Lincoln Memorial Garden or sitting on a bench overlooking the pond adjacent to the Ostermeier Prairie, you're likely to see a dark-colored, furry animal. Five aquatic mammal species may be seen at the Garden: two members of the rodent family, the beaver and muskrat, and three members of the weasel family, the river otter, least weasel and mink.



Beaver. Photo from Getty Images

Beaver

Reaching lengths of 3 to 3.5 feet and weights ranging between 25 and 60 pounds (although there are records of 80 to 90 pound individuals), beavers are the largest rodent in North America.

With large, webbed feet and valves in their nose that close when the animal submerges, beavers are designed for a life in the water. Their broad, flat and

scaled tail comes in handy when slapped against the water to alert other beavers of danger.

Beavers typically live in a colony, constructing dams or lodges, or, as is the case with most Illinois beavers, digging a burrow in the bank of a water body.

—continued on page 4

Welcome New LMG Board Members

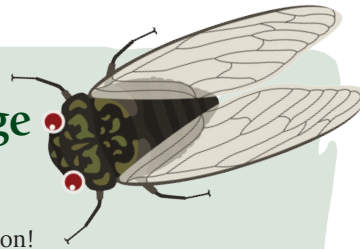
The LMG Board of Directors is delighted to welcome two new members, **Brad Butcher** and **Matthew Price**. Brad is a retired teacher and coach who is a very active and much appreciated member of the Grounds Crew. He taught physical education, English, and health in the Chatham-Glenwood School District and coached multiple sports. He looks forward to serving on the Board of Directors and making sure everyone is aware of the activities and concerns of the Grounds Crew. Brad also volunteers as a librarian at Hazel Dell School and enjoys fishing, golfing, and spending time with his grandchildren. We are excited to draw on his passion for LMG and his many years of experience as a gifted teacher and coach.

—continued on page 6



Director's Message

by Joel Horwedel



Happy summer and cicada season!

After a busy spring, we welcome summer with the start of our 8K Trail Race and annual Summer Ecology Camp. During the next three months, we will have several evening programs, and I encourage you to check out our events calendar.

In May, we hosted our annual Lunch in Bloom event at Island Bay Yacht Club. A huge thank you to Cathy Slater, Susan Flanagan, Cyndee Wilkin, Chris Davis, and Cindy Harris for all their work making it a wonderful event. Many thanks as well to our LMG volunteers who helped with our April and May plant sales. We also hosted our annual volunteer party in April to thank our many wonderful volunteers.

At the Annual Meeting in April, outgoing board members Mark Allan, Lori Reardon, and Cathy Slater were honored for their service on the board. Melissa Skinner-Liberman passed the gavel to new president Megan Styles. A huge thank you to Melissa for her hard work and commitment. During her term, we completed our new strategic plan and began our biggest construction project since the Nature Center. Three new board members were also elected. (See pages 1 and 6 for board bios)

By the time you read this, our Children's Woodland Garden project will be close to completion. This long-anticipated project has created new excitement at LMG, and we are extremely grateful to the Germeraad and Davis families for their amazing generosity. If you haven't checked the Children's Garden out, please come on out and have some fun!

Please mark your calendars for our annual Fall Harvest Festival. This year's event will take place on October 12 and 13. Planning is underway, and we are excited to announce that we anticipate having three food trucks again. Popular activities such as the fairy houses and tree trolls will be returning as well as some new children's activities. Tater Tot Rocks will conduct a special children's show on Saturday morning, and The Deep Hollow is scheduled to close out the Festival on Sunday. As usual we will have many arts and crafts vendors! I hope you will be able to make it out for this family fun-filled weekend, and I will see you out in the Garden this summer! ☺

Welcome from Incoming LMG Board of Directors President Megan Styles

Hello everyone!

It is an honor to serve as the incoming president of the LMG Board. Melissa Skinner-Liberman has been an inspiration to watch in this role. Thank you, Melissa, for your leadership during the last two



years and the many positive changes that you helped bring to LMG, from our new strategic plan to the Children's Woodland Garden! You are a gifted institution builder, and you make everyone around you feel welcomed and included. We're delighted and grateful that you will remain deeply involved as Past President.

For those that haven't met me yet, I am an Associate Professor of Environmental Studies at the University of Illinois Springfield. I love teaching students who are passionate about sustainability and conservation issues and watching them make a difference in our community. Marissa Jones was once my student employee, and now I have the honor of watching her work her particular brand of magic as our Head Gardener. I am a Springfield native and a graduate of Southeast High School. I love long-distance running and eating (usually in that order), reading, being outdoors, and playing with my twin daughters. I have always loved LMG, and I am looking forward to being a small part of the legacy of this beautiful and special place. We have an exciting time ahead of us with many new projects and initiatives.

I hope to see you and get to know you better at the next LMG event! ☺



Year TWO of the Community Scientist Opportunity with The Illinois Bat Conservation Program at LMG!

Community Scientists: volunteers who collect data for research who are not professional scientists but may use the data results to become informed.

- ❖ Our bat population research continues at Lincoln Memorial Garden with acoustic monitoring during the months of June through October. Join this scientific study along a designated one mile LMG trail loop. As a volunteer Community Scientist, your research will include walking with an acoustic monitor recording the echolocation calls of bats half an hour after sunset for a duration of one hour.
- ❖ Interested families, partners, and budding scientists may contact Marissa@lincolnmemorialgarden.org to learn more and sign up to become an LMG Community Scientist. More information is available at The Illinois Bat Conservation Program website at <https://Illinoisbats.org>. ☺



LINCOLN MEMORIAL GARDEN

PHOTO Contest

Lincoln Memorial Garden invites photographers to capture the magic of LMG.

- ◆ Four categories in two age groups
- ◆ Electronic submissions of original works only
- ◆ Cash prizes
- ◆ Rules and entry requirements* at lincolnmemorialgarden.org

**photos not compliant with the rules will be disqualified*

**ENTRIES DUE
AUGUST 23, 2024**



What's New in the Garden?

Are you curious about the reflective arrows above your head along some trails? They have been temporarily placed to assist the Community Scientists as they navigate their after-dusk walks while recording the Garden's bat residents and visitors. ☺

DO YOUR PART: Plant more milkweed!

As many as **1.8 billion** additional stems of milkweed plants may be needed in North America to return imperiled monarch butterflies to a sustainable population size.



(Source: U.S. Geological Survey, April 2017)

Lincoln Memorial Garden Mission

Lincoln Memorial Garden & Nature Center welcomes everyone to experience the native landscape known to Abraham Lincoln. In an atmosphere of peace and beauty, LMG's landscape, designed by Jens Jensen, is a place to find inspiration in the changing seasons and learn stewardship of the environment through thoughtful nature education.



Beavers' large incisors are orange due to the presence of iron in their system. Photo from Getty Images

Beavers are herbivores, meaning they eat plant material. If you get a chance to examine a beaver's skull, note the incisors are large and orange-red in color. The color is from the presence of iron which strengthens the teeth responsible for the work of felling trees.

Muskrat

The back feet of a muskrat are partially webbed, allowing them to swim up to 3 miles an hour. Muskrats can also swim backwards.

Measuring only 16 to 25 inches in length—including the thin, vertically flattened and nearly hairless tail—muskrats top the scale at 4 pounds.

Usually a solitary species, muskrats prefer still or slow-moving water where they feed on



Muskrat. Photo from Getty Images

vegetation and use it to construct a lodge. Most often, Illinois muskrats dig a burrow in the bank of a water body.

Typically active at night and throughout the year, muskrats become active on overcast days and during daylight in spring and early summer.

Their main predator is the mink, although they are also preyed on by hawks, owls, coyotes, foxes, raccoons, large snakes and snapping turtles.

River Otter

Reaching lengths of nearly 4.5 feet and weighing up to 30 pounds, the river otter is the largest Illinois member of the weasel family. As few as 100 river otters remained in Illinois until a recovery effort was undertaken in the mid 1990s.

River otters are primarily aquatic in nature, with a long, streamlined body shaped for swimming. Don't spend too much time watching the spot where a river otter submerged



River otter. Photo from Getty Images

as they remain underwater for 3 to 4 minutes and may pop up a quarter mile away. Otters also can be observed loping across land or bounding and sliding across ice or through snow.

River otters prefer wetland habitats with nearby timber, where they most actively feed around dawn and dusk. While their primary foods are fish and crayfish, they will eat turtles, snakes, salamanders, earthworms and carrion.

Bobcats and coyotes are the main predators of river otters.

American Mink

American minks weigh only 2 to 3 pounds, and their bodies are slender and up to 28 inches in length. Their dark brown to reddish

fur is marked by a white patch on their chin and black tipped tail.

Mink are solitary and primarily nocturnal, but they may be sighted during the day. While they do not hibernate, mink will not venture away from their den during extreme winter conditions.

Mink live on the shores of rivers, streams, lakes, ponds and marshes where they may be seen climbing a tree in search of a meal. Equally at home in the water, they are strong swimmers, able to dive to depths of more than 16 feet and swim underwater for 100 feet or more.

Mink are strict carnivores, with their diet varying by season. For much of the year their diet is primarily frogs, tadpoles, fish, crayfish and muskrats, switching to mice, voles and rabbits during the winter. In turn, minks are among the foods consumed by coyotes, foxes, bobcats and great horned owls.



Above: American mink. Left: Long-tailed weasel. Photos from Getty Images

Long-tailed Weasel

Despite the fact it is the smallest (11 to 17 inches in length and weighing between 3 and 10 ounces) of the aquatic mammals you may encounter at Lincoln Memorial Garden, the long-tailed weasel is a fierce predator. Active throughout the day, long-tailed weasels move across land with a loping gait while hunting for mice, rats, voles, ground squirrels, chipmunks and rabbits.

This weasel lives in woodlands, thickets, and brushy fencerows, and they will climb trees. Locations near water are ideal as they also are strong swimmers.

Their reddish-brown summer fur may turn all-white during the winter months.

These water-loving mammals play an important role in the health of aquatic ecosystems and in the balance of the food web—as predators and prey.

To learn more about these and other mammals visit Wildlife Illinois at wildlifeillinois.org 🐾

“Look deep into nature,
and then you will understand everything better.”

—Albert Einstein

Thank you for supporting our two annual plant sales along with the local pollinators and insects

Tips to keep your native plants happy:

Tip 1: Place transplants deep enough in the soil so that the bud/crown is one inch below the soil. Gently compress the soil around the plant. You may want to mulch to retain soil moisture and keep weeds under control. Water your plants immediately after planting.

Tip 2: Maintenance water evenly once a week for the first six to eight weeks in the early morning. After that, because of their deep root systems, native species generally do not need upkeep other than weed control. ∞



BOARD MEMBERS — cont'd from page 1

Matt Price is a Human Resources Manager for Springfield Clinic and is an LMG Grounds Crew volunteer. Matt also serves on the Board of Directors for 100+ Who Care in Springfield (givebutter.com/100-who-care-in-springfield), which uses the "giving circle" concept to raise money for local organizations. Matt enjoys reading, playing pickleball, and growing native plants and trees. He recently planted a 20'x20' tall grass prairie in his back yard. He brings a wealth of knowledge and experience related to personnel issues, succession planning, employee engagement, and community-building to LMG. ∞

2024 Pancake Breakfast Fun Facts



ATTENDEES! Thank You!



280 auction items



15 GALLONS of syrup



New Members

- Alan Carey
- Cathy Catalano
- David Choi
- Dawn Dunbar
- Ralph and Teresa Foster
- William Furry
- Amy Gelber
- Raegan Hennemann
- Hillary Nevins
- Amy Nudo
- Gwendolyn Peebles
- Hilary and Matthew Rives
- Ronald G. Robeen
- Katie and Tom Rodden
- Barbara Scharmer
- Glenn Weatherford

Thank You to Our Many Supporters!

Annual Fund Donors

Ruth and David Hicks
Larry Roth
Vivian Bennett-Held
Michael Bowers
Dale and Pam Brooks
Megan and Chad DeFrain
Michael and Carol Diedrichsen
Mila Gomez
Howard and Lori Hammel
Ron and Beth Horwedel
Patrick Kelley and Tammie Klein
David and Cathy Kolaz
Marlene and Scott Mulford
Amy Nudo
Stacy Ratz
Callandria Smith
Judy and Ted Sunder
Ricardo Thompson
Jennifer and Rex Williamson
Emily Wright

Lunch in Bloom Sponsors

Dan and Carolyn Dungan
David and Laurie Farrell
Phyllis Rae Rominger
Donna Russell

Children's Woodland Garden Sponsor

Michael Hersch

Memorial Tree Sponsors

Anna Bolt
Sally A. Putnam

Fire Pit for Children's Garden Patio Sponsors

Ron and Beth Horwedel

Friends Fund Donor

Elisa Royce

Membership Matters

If you are a **current** Member of Lincoln Memorial Garden, be sure to **RENEW** your membership soon if you have not done so already.

Your annual membership may lapse on May 31.

If you are not yet a member, we would love for you to join our family! Lincoln Memorial Garden is a private, self-sustaining, 501(c)(3) organization that relies 100% on donations and memberships. It is a common misconception that we are a publicly-funded park or nature preserve. Your annual membership helps fund our mission and operations, so we can keep the trails maintained and continue to offer robust education programming and activities.

Ask a staff person at the Nature Center, or call 217-529-1111, or visit <https://www.lincolnmemorialgarden.org/support-the-garden/membership/> to learn about the many exciting benefits of membership for you and your family.

Your support and friendship mean so much. Thank you! ☺



Memorials



To the following individuals who have chosen to honor the memory of a loved one with a gift to Lincoln Memorial Garden, we say thank you.

The following donors gave in memory of **George Fairchild**:

- ❖ Tom and Claudette Hiler
- ❖ Adele Hodde
- ❖ Cathy and Doug Slater

The following donors gave in memory of **Mike Tyner**:

- ❖ Helen and Dick Adorjan
- ❖ Polly and Mark Danforth
- ❖ Elena R. Hornshaw
- ❖ Neill and Jan Howey
- ❖ Terrence Mazrim
- ❖ Ron Peddicord

The following donors gave in memory of **David Scott**:

- ❖ Richard and Cynthia D. Nagle

Day Trip offered on June 27 for all interested and curious eco-enthusiasts!

At 7:30 a.m., a coach bus will depart LMG parking lot and make stops at the Mason State Tree Nursery in Topeka, IL, a Los Charros lunch in Havana, and the Jake Wolf Memorial Fish Hatchery in Topeka. After staff-led tours and time to explore, the bus will return to LMG after 4 p.m.

Reservations, bus cost and further information can be found on the LMG website or by calling 217-529-1111.

As Illinois' only state tree nursery, **Mason State Tree Nursery** has a history rooted in conservation and a dedication to producing high-quality native tree seedlings, prairie plants, and wildflower seeds using a hands-on approach, where everything produced is hand-picked, hand-planted and hand-cleaned.

The **Jake Wolf Memorial Fish Hatchery**, originally the Sand Ridge Hatchery, opened in 1983 to produce the high volume and diversity of fish needed to keep up with increasing sport-fishing demands. In 1985 the hatchery was renamed after the former Deputy Director of Conservation. It has produced more than 500 million sportfish encompassing 21 species. Jake Wolf's water is supplied by the expansive Mahomet Aquifer, where 10 wells can deliver 6,000 gallons of water per minute to the hatchery. Now approaching its 40th year in service, Jake Wolf Memorial Fish Hatchery remains the largest of the three publicly owned hatcheries in the state of Illinois. ☺



FOUNDED 1936



Lincoln Memorial Garden & Nature Center

A Project of The Garden Clubs of Illinois, Inc.

2301 East Lake Shore Drive
Springfield, Illinois 62712-8908

Address Service Requested

Non-Profit Org.
U.S. Postage
PAID
Springfield, IL
Permit No. 500



CALENDAR

JUNE

- 8..... Cicada Saturday | 10 a.m. – 6 p.m.
- 19..... Nature Center Closed for Juneteenth
- 27..... Day Trip to Mason State Tree Nursery and Jake Wolf Memorial Fish Hatchery | 7:30 a.m. – 4 p.m.

JULY

- 4..... Nature Center Closed for Fourth of July

AUGUST

- 12..... Perseid Astronomy Program | 7:30 – 10 p.m.
- 23..... 2024 Photo Content Entry Deadline | 5 p.m.

SEPTEMBER

- 7..... Monarch Program for Kids | 7:30 a.m. – 4 p.m.

OCTOBER

- 12 – 13..... Fall Harvest Festival